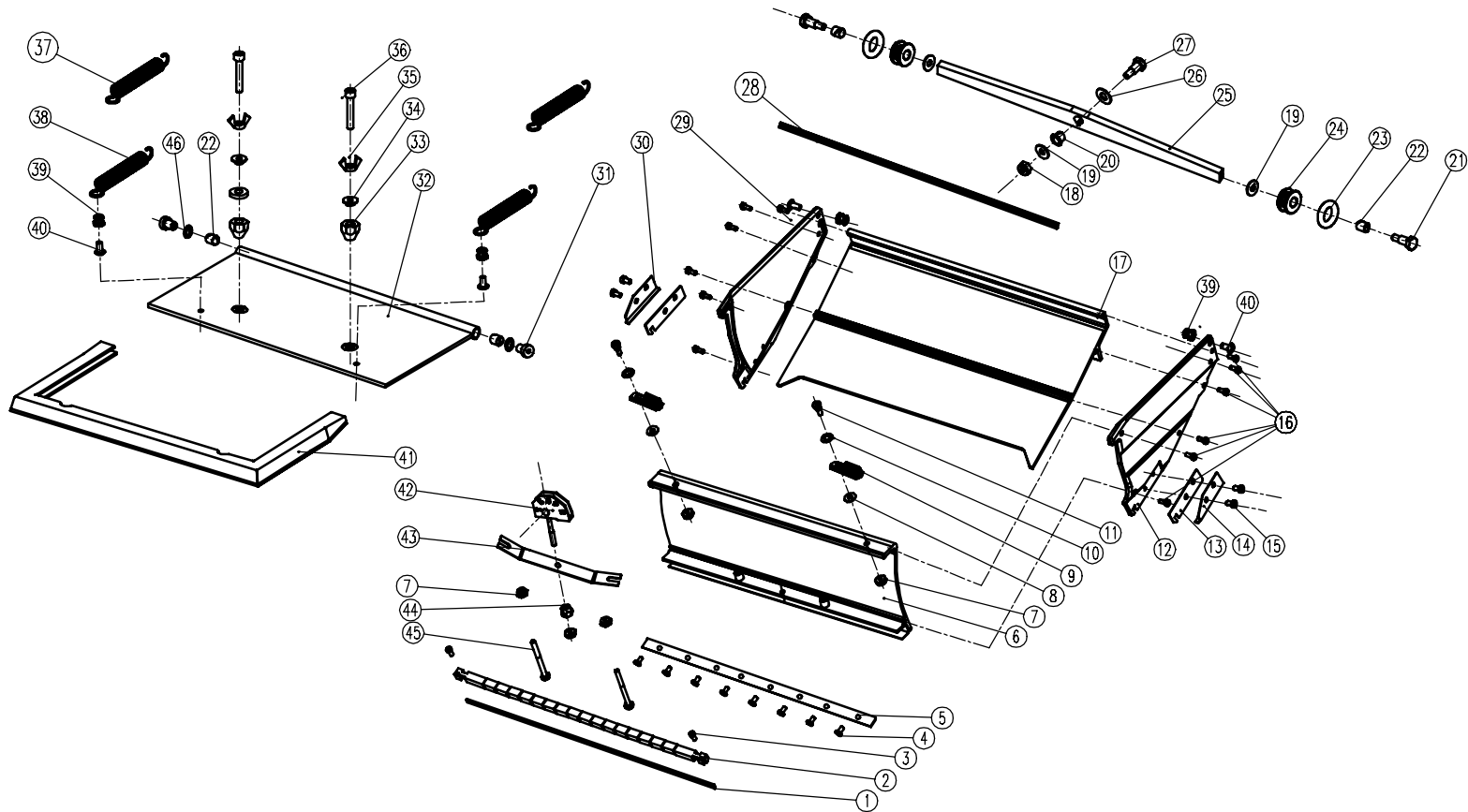


LEVEL 5



Standard Flat Box 7" 10" 12" 14"
4-764 4-765 4-766 4-770

LEVEL 5

Level5 Hinged Flat Boxes					
7, 10, 12, and 14"					
Schematic#	Description	Part Number			
		7"	10"	12"	14"
1	Box Blade	7207	7254	7270	7273
2	Blade Holder Assembly	7208	7267	7284	7274
3	4-40x1/4 Screw	7217			
4	Screw	9219			
5	Blade Holder Bracket	9285	9268	9270	7552
6	Front Plate	7241	7242	7243	7244
7	6-32 Lock Nut	7015			
8	Plastic Washer	9613			
9	Latch	7792			
10	Washer	7798			
11	6-32 Screw	7793			
12	Left Side Plate (Standard Size)	7255			
13	Repair Clip	7224			
14	Left Side Box Shoe	7239			
15	6-32 Screw	7012			
16	Screw	7349			
17	Bottom Plate (Standard Size)	7226	7227	7228	7229
18	10-32 Lock Nut	8302			
19	Brass Washer	7177			
20	Bearing	7063			
21	Box Wheel Bolt	8301			
22	Plastic Bearing	7119			
23	White Rubber Tire	9685			
24	Black Box Wheel	9719			
25	Box Axle	7281	7280	7282	7278
26	Brass Washer	7178			
27	Box Axle Bolt	9237			
28	Hinge Pin Shim (Rubber)	7380	7381	7382	7383
29	Right Side Plate (Standard Size)	7256			
30	Right Side Box Shoe	7212			
31	Pivot for Box Plate Hinge	7388			
32	Hinged Pressure Plate	7394	7395	7396	7397
33	Pressure Plate Nut	8306			
34	T Nut	8232			
35	Wing Nut	9916			
36	Screw Post	8303			
37	Heavy Duty Pressure Plate Spring	8273			
38	Lightweight Pressure Plate Spring	9273			
39	Spring Anchor	8305			
40	8-32x3/8 Screw	8291			
41	Gasket	7390	7391	7392	7393
42	Dial Assembly	7251			
43	Crown Spring	7216		7275	
44	Dial Adjustment Nut	7223			
45	Brass Pins	7213			

Standard Flat Box
7" 10" 12" 14"